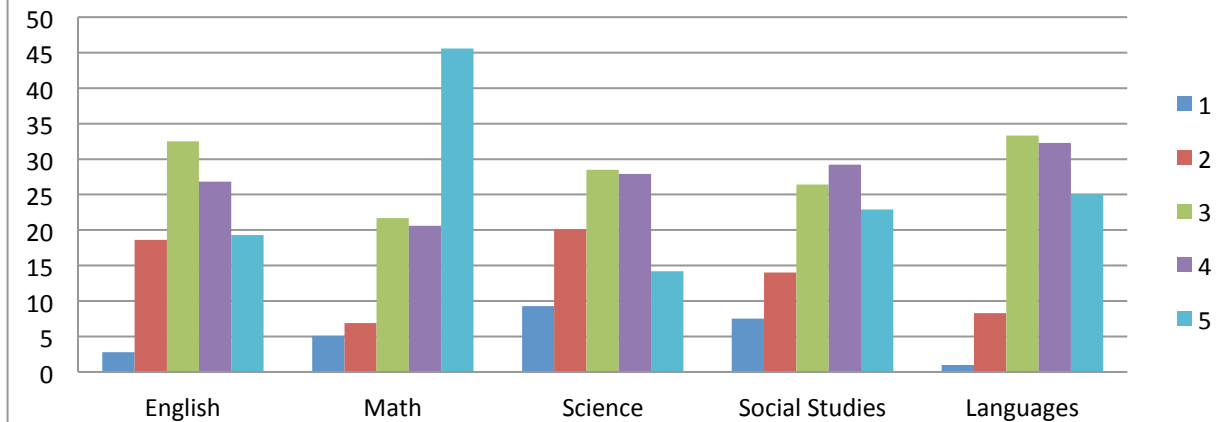


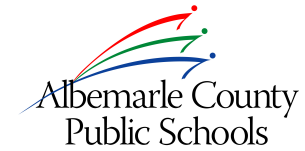
Advanced Placement Frequencies, by Subject

Frequency of Student Scores by Subject

	1		2		3		4		5	
	N	%	N	%	N	%	N	%	N	%
English	11	2.8	72	18.6	126	32.5	104	26.8	75	19.3
Math	23	5.1	31	6.9	97	21.7	92	20.6	204	45.6
Science	32	9.3	69	20.1	98	28.5	96	27.9	49	14.2
Social Studies	77	7.5	144	14	271	26.4	300	29.2	235	22.9
Languages	1	1	8	8.3	32	33.3	31	32.3	24	25.0

Percentage of Scores by Subject





Advanced Placement Frequencies, by Demographic

Division Frequency Tables by NCLB Subgroup						
Division	Enrolled in AP		Took a Test		Passing Score	
	N	%	N	%	N	%
Division	1464	34.9%	1128	77.0%	910	80.7%
Males	634	30.2%	487	76.8%	397	81.5%
Females	830	39.6%	641	77.2%	513	80.0%
Asian	99	48.8%	85	85.9%	68	80.0%
Black	67	14.0%	31	46.3%	19	61.3%
Hispanic	72	20.2%	41	56.9%	29	70.7%
White	1153	39.3%	923	80.1%	753	81.6%
Multi-Race	72	35.0%	47	65.3%	40	85.1%
Disadvantaged	122	12.8%	52	42.6%	28	53.8%

AHS Frequency Tables by NCLB Subgroup						
Albemarle	Enrolled in AP		Took a Test		Passing Score	
	N	%	N	%	N	%
Albemarle	561	29.2%	454	80.9%	392	86.3%
Males	244	25.2%	196	80.3%	174	88.8%
Females	317	33.3%	258	81.4%	218	84.5%
Asian	59	41.5%	52	88.1%	45	86.5%
Black	30	11.2%	17	56.7%	11	64.7%
Hispanic	25	13.7%	16	64.0%	13	81.3%
White	424	34.6%	354	83.5%	309	87.3%
Multi-Race	23	24.5%	15	65.2%	14	93.3%
Disadvantaged	38	8.3%	16	42.1%	10	62.5%

*Murray High School is included in the division data, but not disaggregated because the N is too small

WAHS Frequency Tables by NCLB Subgroup						
Western	Enrolled in AP		Took a Test		Passing Score	
	N	%	N	%	N	%
Western	404	39.2%	367	90.8%	318	86.6%
Males	164	34.6%	144	87.8%	131	91.0%
Females	240	43.1%	223	92.9%	187	83.9%
Asian	18	58.1%	18	100.0%	16	88.9%
Black	*					
Hispanic	16	37.2%	13	81.3%	*	
White	343	39.4%	315	91.8%	274	87.0%
Multi-Race	17	40.5%	14	82.4%	14	100.0%
Disadvantaged	17	17.3%	*			

MoHS Frequency Tables by NCLB Subgroup						
Monticello	Enrolled in AP		Took a Test		Passing Score	
	N	%	N	%	N	%
Monticello	490	45.0%	300	61.2%	197	65.7%
Males	225	39.8%	146	64.9%	91	62.3%
Females	265	50.6%	154	58.1%	106	68.8%
Asian	22	75.9%	15	68.2%	*	
Black	28	18.7%	*			
Hispanic	31	24.8%	12	38.7%	*	
White	378	52.6%	247	65.3%	167	67.6%
Multi-Race	31	50.0%	18	58.1%	12	66.7%
Disadvantaged	63	17.5%	24	38.1%	12	50.0%

* The number of students is too small to report